



4 Turton Street
Weymouth, DT4 7DU

Asking Price £150,000 Share of Freehold

 2  1  1  C

4 Turton Street Weymouth, DT4 7DU

****OFFERED WITH NO ONWARD CHAIN****

A well-presented two bedroom maisonette located in the heart of Weymouth, featuring a modern fitted kitchen and contemporary bathroom. Set over two levels with bright, well proportioned living space, its ideally located close to the sea front, shops and amenities. Perfect for a holiday home or investment opportunity.

Entrance Hall

Kitchen

9'6" x 8'10" (2.9 x 2.7)

Modern fitted kitchen comprising of a sink unit set into work tops with a range of drawers and cupboards, wall mounted cupboards, Island with cupboards below, four ring gas hob and electric oven, space for fridge freezer

Bedroom 1

8'10" x 8'2" (2.7 x 2.5)

Window to front

Bedroom 2

11'9" x 6'2" (3.6 x 1.9)

Large fitted wardrobes & Window to front

Bathroom

6'6" x 5'10" (2.0 x 1.8)

Modern Fitted bathroom with Tiled Bath, wall mounted shower, WC, Wash hand basin & a chrome heated towel rail.

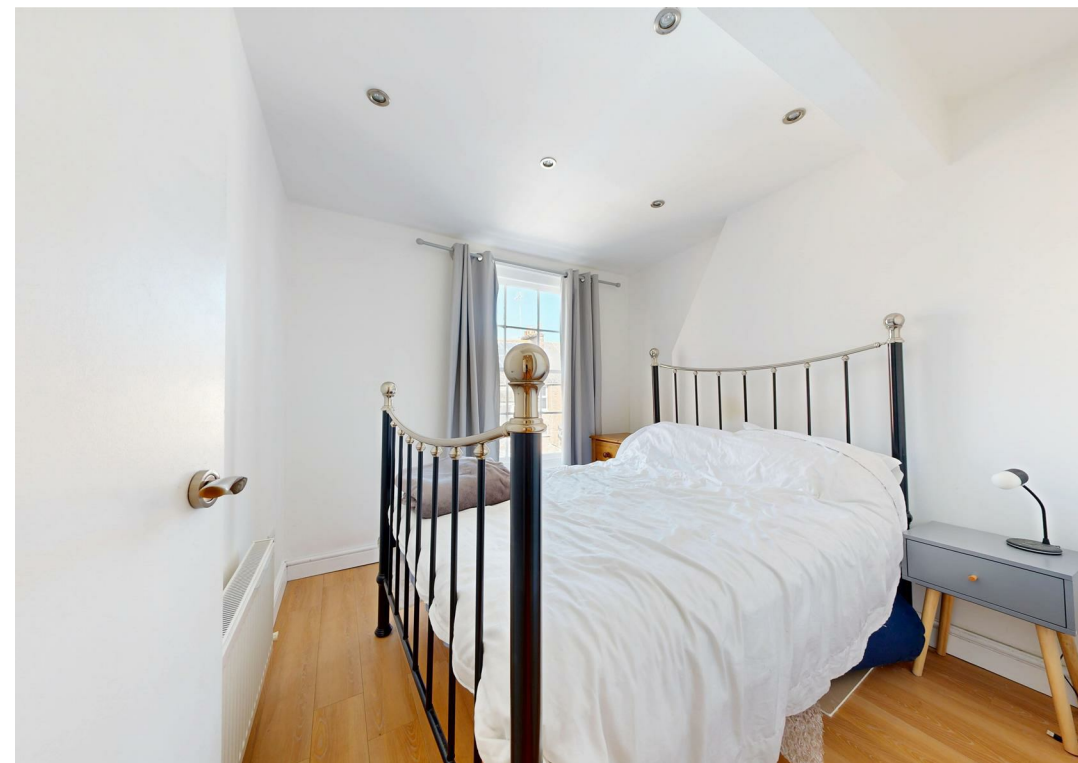
Living Room

15'1" x 12'9" (4.6 x 3.9)

3 velux windows and eave storage

Parking

No parking with the property, parking permits are available to purchase through Dorset Council.





Lease Information

999 Year Lease
Years remaining- TBC
Ground Rent- NIL
Maintenance Charge- Split 3 ways
between the flats
Pets allowed

Council Tax

Band A with Dorset Council

Flood Risk

Very low risk from rivers sea or surface
water

Construction

Traditionally built with solid walls under a
pitched roof.

Phone and Broadband signal strength and coverage

Mobile phone signals Vodafone and O2
are strong & EE and 3 are average
TV, Sky & BT are available Virgin is not
available
Broadband estimated standard 15 mbps
superfast 80 mbps ultrafast Not available
at the moment



Legal Disclaimer

These particulars, whilst believed to be
accurate are set out as a general outline
only for guidance and do not constitute
any part of an offer or contract. Intending
purchasers should not rely on them as
statements of
representation of fact, but must satisfy
themselves by inspection or otherwise as
to their accuracy. All measurements are
approximate. Any details including (but
not limited to): lease details, service
charges, ground rents & covenant
information are provided by the vendor
and you should consult with your legal
advisor/ satisfy yourself before
proceeding. No person in this firms
employment has the authority to make or
give any representation or warranty in
respect of the property.

Floor Plan

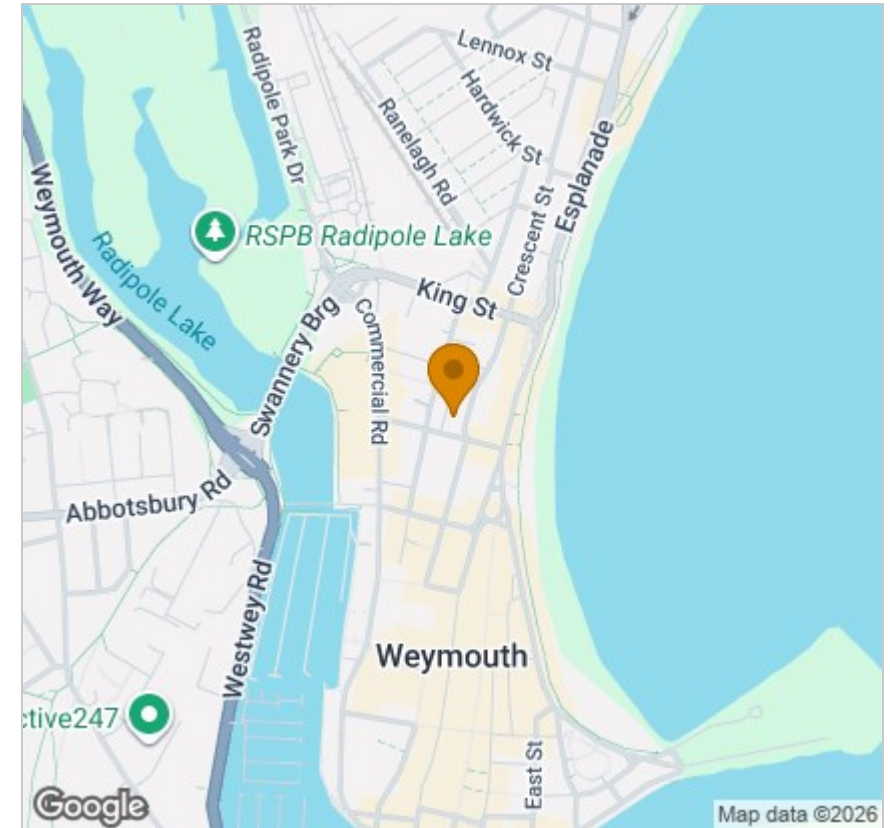


Viewing

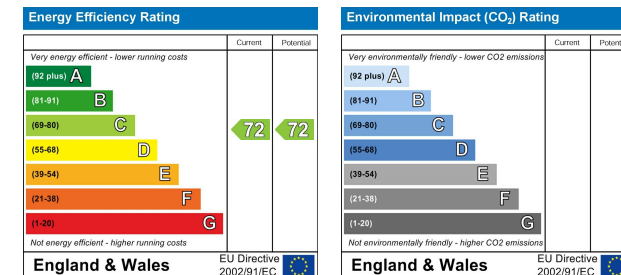
Please contact our Hull Gregson & Hull Weymouth Office on 01305 776 666 if you wish to arrange a viewing appointment for this property or require further information.

These particulars, whilst believed to be accurate are set out as a general outline only for guidance and do not constitute any part of an offer or contract. Intending purchasers should not rely on them as statements of representation of fact, but must satisfy themselves by inspection or otherwise as to their accuracy. All measurements are approximate. Any details including (but not limited to): lease details, service charges, ground rents & covenant information are provided by the vendor and you should consult with your legal advisor/ satisfy yourself before proceeding. No person in this firms employment has the authority to make or give any representation or warranty in respect of the property.

Area Map



Energy Efficiency Graph



35 St Thomas Street, Weymouth, DT4 8EJ
 Tel: 01305 776 666 Email: property@hgh.co.uk www.hgh.co.uk